

www.simset.com.tr

# PRODUCT CATALOG



# 2025

***QUALITY IS A HABIT***



## WHO ARE WE?

Simset was founded in 1999 by our founder Hakkı ÖNER on a total area of 2,000 m<sup>2</sup>, consisting of 1,000 m<sup>2</sup> indoor and 1,000 m<sup>2</sup> outdoor space. Starting its activities with the aim of producing production and storage facilities for LPG, petroleum, and chemical products, our company has proven its quality and reliability by working with many large companies in the energy sector. Especially in the LPG sector, it has strengthened its mission in the sector by focusing on the manufacturing of auxiliary spare parts and components for facilities. Since 2017, it has started to serve as an Inspection Center for Vehicles Carrying Dangerous Goods authorized by the T.R. Ministry of Transport and Infrastructure. Our company is a member of the Chamber of Commerce and holds an Industrial Registration Certificate.



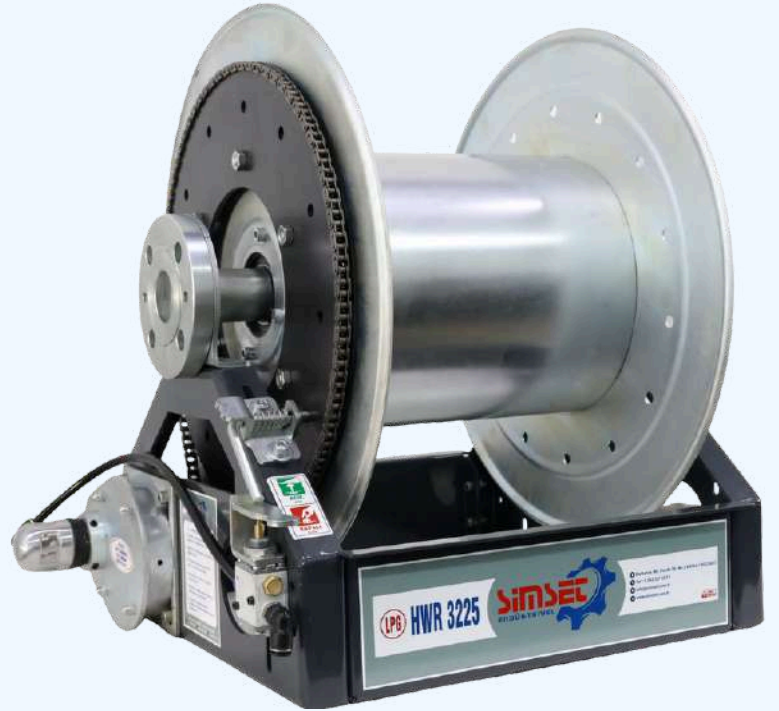
## OUR VISION

To produce LPG, fuel oil, and petroleum products, as well as related construction, tanks, installation, machinery assembly, and auxiliary units regarding operation and storage, by raising them to the highest quality.



## OUR MISSION

To constantly improve by closely following technological developments. To maximize customer satisfaction without compromising on quality and trust.









LPG EQUIPMENT

# EFHV Series Hydraulic Valve

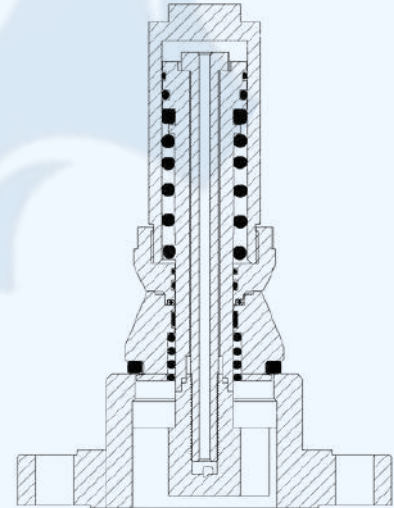



EFHV

EFHV Series Hydraulic Valve The EFHV series hydraulic valves with excess flow valves are designed as the primary shut-off system in the liquid filling/discharge lines of transport, spherical, and stationary LPG tanks. EFHV series valves are used as remotely controlled safety valves on liquid or gas outlets or pipelines in tanks ranging from 10 m<sup>3</sup> to 5,000 m<sup>3</sup>. They can be installed directly at the tank outlet or positioned externally using a hydraulic sleeve. Thanks to these features, they provide both safety and operational convenience.

<b>Nominal Diameter</b>	DN 50-DN 250
<b>Connection Flange</b>	DIN 2533-2545/ASME B 16.5 RF
<b>Working Pressure</b>	20 Bar
<b>Test Pressure</b>	30 Bar
<b>Opening-Closing Distance</b>	40 mm.
<b>Working Temperature</b>	-20 / +65° C
<b>Opening-Closing Process</b>	Oil / Spring Pressure
<b>Approval Authority</b>	ADR 6.8 and TPED 2010/35/EU
<b>Design Standard</b>	EN 13175 : 2019
<b>Hydraulic Connection</b>	R 1/4" female thread

Technical Drawing



Usage Areas: 

## DIMENSIONS

DIN	2"	3"	4"	6"	10"
ASA	2"	3"	4"	6"	10"

## Box Contents:

- Hydraulic Valve (1 Pc.)
- B7 Stud Nut (8 Pcs.)
- Fusible Plug (1 Pc.)

## General Features

The EFHV series has been specially designed and developed to eliminate space constraints, assembly and maintenance difficulties, corrosion and sealing problems, and fire safety deficiencies encountered in existing systems.

**Compact Design:** The excess flow valve is integrated into the valve body, increasing the system's compactness and simplifying the assembly process.

**Durable Material:** Maximum corrosion resistance is ensured with 7000 series aluminum and stainless steel springs.

**High Sealing:** Superior sealing performance is achieved thanks to fiber-reinforced NBR gaskets.

**Fire Safety:** The special alloy heat-sensitive device, which melts in the 95°C - 103°C range, ensures automatic shut-off in case of fire, maximizing system safety.

**International Compliance:** The EFHV series ensures compliance with international standards while increasing system efficiency and safety with its innovative features.

## Packaging and Storage:

EFHV-2: Box Dim. 178x172x305 mm - Box Weight 5.9 Kg - Product Weight 3.8 Kg  
EFHV-3: Box Dim. 215x222x312 mm - Box Weight 8.8 Kg - Product Weight 5.5 Kg

7

The data contained in this technical document is based on our scientific and practical knowledge. **SİMSET ENDÜSTRİ TAAH. TİC. & MAK. SAN. LTD. ŞTİ.** is responsible solely for the quality of the product. **SİMSET ENDÜSTRİ TAAH. TİC. & MAK. SAN. LTD. ŞTİ.** cannot be held liable for consequences arising from misuse and/or usage outside of the written recommendations regarding where and how the product is to be used. This technical document is valid until a new edition is published and supersedes all previous editions.



# HWR Series Hose Reel



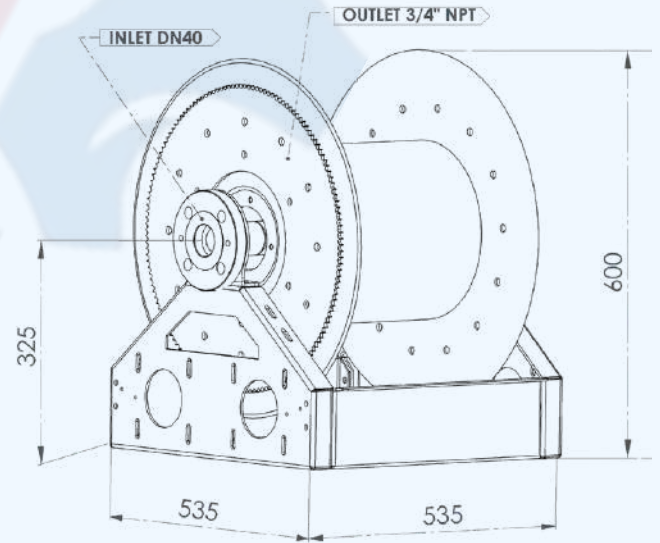
HWR-3225



The HWR series is designed to ensure order and safety in workspaces. By ensuring hoses are wound properly, it eliminates knotting, kinking, and the need for manual collection, thus helping to save time. Additionally, it prevents damage to the hoses, avoiding issues such as cracking and leakage. Specially manufactured for LPG applications, the HWR-3225 minimizes hose wear and contributes to a more efficient and safe use of the workspace.

<b>LPG Hose</b>	DN 32 ≤ 25 Meters
<b>Connection Flange</b>	DIN 2533- 2545
<b>Working Pressure</b>	17.5 Bar
<b>Test Pressure</b>	26.5 Bar
<b>Working Temperature</b>	-20 / +65° C
<b>Connection</b>	Inlet DN 40; Outlet 3/4" NPT
<b>Connection Flange Height</b>	325 MM
<b>Pneumatic Motor Air Inlet</b>	8 MM
<b>Design Standard</b>	ADR 6.8
<b>Safety Valve</b>	R 1/4" Male Thread

## Technical Drawing



### General Features

**Drum Drive Options:** The drum can be manufactured with pneumatic, hydraulic, or mechanical drive options upon request.

**Hose Capacity:** It has a winding capacity for a DN 32 x 25 meter hose.

**Frame Dimensions and Custom Production:** In addition to standard frame dimensions, production can be made in dimensions suitable for special orders.

**Compact Mounting Advantage:** The internally mounted double-bearing swivel offers easy and compact mounting in narrow spaces.

**Durable Bearing System:** The sealed grooved ball bearing system on both sides ensures long life and smooth operation.

**Safety Valve Compliance:** Thanks to the safety valve on the drum, the requirement to have a safety valve between two shut-off valves as specified in the ADR 6.8 standard is met.

**Usage Area:** Designed and produced specifically for LPG tankers.

Usage Areas: 

### Packaging and Storage:

Width: 535 mm | Length: 535 mm | Height: 600 mm  
Weight (Without Hose): 44.7 Kg

### Package Contents:

- Hose Reel (1 Pc.)
- Pneumatic Motor (1 Pc.)
- LPG Swivel (1 Pc.)

# OTS Series Hydraulic Oil Tank



## OTS-1280

OTS series tanks are a crucial component of the system that enables the hydraulic drive operation of the pump used in LPG supply systems. The hydraulic pump, powered by the PTO (Power Take-Off) on the vehicle, operates the hydraulic motor coupled to the LPG pump at the desired RPM, making LPG transfer possible. OTS series tanks safely store the hydraulic oil used in this system; they prevent the oil from overheating, supporting the system's efficient operation. At the same time, they provide controlled oil flow and occupy minimum space on the vehicle with their compact structure.

<b>Oil Capacity</b>	80 Lt.
<b>Cooling Capacity</b>	120 Lt / Min
<b>Pneumatic System Control</b>	+
<b>Open Circuit Directional Valve</b>	+
<b>Manometer</b>	0-400 Bar
<b>Suction Filter</b>	MHE 30
<b>Return Filter</b>	300 Lt/Min
<b>Oil Flow Rate</b>	50 Lt/min - 80 Lt/min
<b>Connection</b>	Inlet DN 40; Outlet 3/4" NPT

### Product Drawing



### General Features

**High Efficiency:** Thanks to the hydraulic oil cooler located on the system, excessive heating that may occur during operation is prevented, minimizing performance loss.

**Controlled System Management:** The open circuit directional valve allows the system to be controlled more easily and safely, while also keeping the system pressure balanced.

**Advanced Filtration:** Thanks to the filters located on the suction and return lines, the hydraulic oil is purified from contaminants, extending the oil's life and ensuring the system operates smoothly for a long time.

**Instant Pressure Monitoring:** The system's operating pressure can be monitored instantly via the manometers located on the tank.

**Pneumatic Control Integration:** The switch integrated into the system allows electronic signals to work in synchronization with pneumatic movements, thus ensuring full compatibility with automation systems.

### Packaging and Storage:

Width: 535 mm | Length: 535 mm | Height: 600 mm  
Weight (Empty): 67 Kg

Usage Areas:

LPG

### Package Contents:

- Hydraulic Oil Tank System (1 Pc.)

# SCP Series Selector Control Box



SCP-02

The selector box is a control system that allows the operational supply process of a tanker in supply mode to be managed safely and efficiently from a single center. Special production options are available suitable for automatic or manual vehicles, and pneumatic or hydraulic bottom valves. In emergencies, it can disable the system at any stage of the supply.

<b>Connection</b>	Inlet: M8; Outlet: M6
<b>Working Pressure</b>	8 Bar
<b>Emergency Stop System</b>	+
<b>Hydraulic Connection</b>	R 1/4" Male Thread
<b>Manometer</b>	0-16 Bar

## Product Drawing



## General Features

**Central Control Capability:** Allows managing the entire operational process of the tanker during supply safely and efficiently from a single center.

**Emergency Stop System:** Can disable the system at any stage of the supply in emergencies; it terminates the supply safely by closing the bottom valves and stopping the pump.

**Broad Compatibility:** Special production options are offered that are fully compatible with automatic or manual vehicles, and pneumatic or hydraulic bottom valves.

**Road Position Safety:** The vehicle cannot move unless the selector box is switched to the "road position." This prevents unwanted movements during supply.

**Pneumatic Pressure Control:** Thanks to the manometer located on it, pneumatic pressure can be monitored instantly and kept under control.

**High-Safety Material Usage:** Produced with durable and quality materials in accordance with standards, providing long-lasting use and high safety.

## Packaging and Storage:

Width: 254 mm | Length: 260 mm | Height: 147 mm  
Weight (Empty): 5.75 Kg

Usage Areas: 

## Package Contents:

- Selector Box (1 Pc.)

# HJS Series Hose Nozzle Swivel

HJS - 134

The Hose Nozzle Swivel is designed to increase flexibility and safety in workspaces. It allows the filling valves at the hose ends to rotate freely 360°. The product is made of aluminum material.

<b>Connection</b>	Inlet 1" NPT ; Outlet 1" NPT
<b>Working Pressure</b>	25 Bar
<b>Test Pressure</b>	40 Bar
<b>Working Temperature</b>	-20 / +65° C
<b>Sealing:</b>	NBR

### General Features

**360° Free Rotation:** Allows the filling valves at the hose ends to rotate freely 360°. It prevents the hose from twisting, kinking, and stretching.

**Increased Hose Life:** By reducing mechanical stresses on the hose, it minimizes damages such as cracking, wear, and rupture.

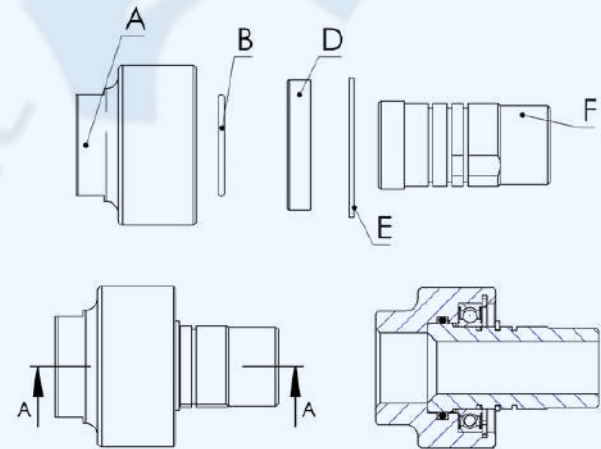
**Flexible and Efficient Use:** Ensures the hose can be directed easily during filling operations. It offers convenience to the user and shortens the operation time.

**Durable Body Structure:** The high-quality aluminum body provides superior resistance against outdoor conditions and chemical effects.

### Packaging and Storage:

Width: 68 mm | Length: 96 mm  
Weight (Empty): 0.435 Kg

### Technical Drawing



### DIMENSIONS

	A	B	D	E	F
HJS-134	1"	O-RING	Bearing	Piston Ring	1"

A-F: NPT

### Package Contents:

- Hose Nozzle Swivel (1 Pc.)

Usage Areas:

LPG

# HMO Series Hydraulic Hand Operator



HMO-02

The HMO series is a mechanical control unit that creates pressure in the system by transmitting the contained oil to hydraulic valves via manual pumping, ensuring the safe opening and closing of valves. With a maximum pressure capacity of 0-100 bar and a structure compatible with the emergency stop system, it offers an effective solution for the need for safe and manual control in LPG systems. The product is made of steel material.

Connection	R 3/8" Female Thread
Working Pressure	0-40 Bar
Maximum Pressure	100 Bar
Tank Capacity	2 Lt - 6 Lt
Manometer	0-40 Bar

Product Drawing



## General Features

**Manual Hydraulic Control:** Hydraulic valve control is provided manually by creating oil pressure by hand.

**Pressure Monitoring & Adjustment:** The hydraulic pressure inside the system can be easily monitored thanks to the manometer. The 0-40 bar pressure setting ensures the safe opening and closing of hydraulic valves.

**High Pressure Capacity:** The system has the capacity to produce a maximum of 100 bar pressure.

**Two Different Model Options:** Two different models with 2-liter and 6-liter storage capacities are offered.

**Emergency Stop Compatible:** It has an infrastructure suitable for the installation of emergency stop systems.

**Reliable and Durable Design:** It offers long-lasting and reliable performance in harsh field conditions, especially in LPG systems.

## Packaging and Storage:

Width: | Length: | Height:  
Weight: Kg

Usage Areas: 

## DIMENSIONS

HMO - 02	2 LT
HMO - 06	6 LT

## Package Contents:

- Hydraulic Operator (1 Pc.)

# LTF Series Transfer Nipple



TN-23



TC-23



LTF Series Nipples are specially designed to perform LPG supply operations in liquid filling/discharge systems of transport, spherical, and stationary LPG tanks. They are produced with high safety standards to prevent gas leaks that may occur during supply operations.

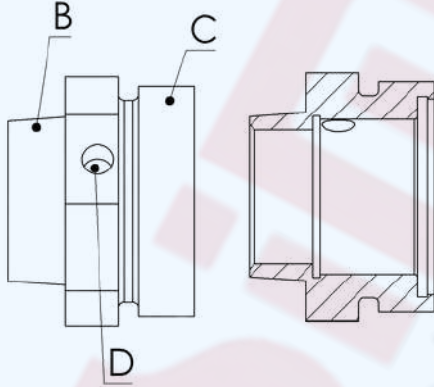
<b>Connection</b>	Inlet DN ; Outlet ACME
<b>Working Pressure</b>	17.5 Bar
<b>Material</b>	Forged Brass

## General Features

**Maximum Flow Efficiency:** Specially designed for LPG supply to provide minimum flow restriction, ensuring high efficiency in filling and discharge operations.

**Durable and Reliable Material:** The forged brass nipple structure offers higher pressure resistance compared to cast brass materials. It also possesses high corrosion resistance thanks to its brass structure.

## Technical Drawing



## DIMENSIONS

	B	C	D
TN-22	1¼"	2¼"	¼"
TN-23	2"	3¼"	¼"

B: NPT C: ACME

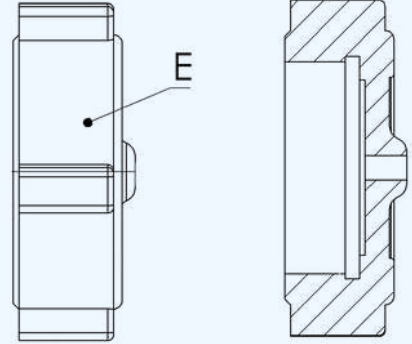
## Packaging and Storage:

Diameter: 87.5 mm Len: 66 mm  
Weight: 1.13 Kg

### Package Contents:

- Transfer Nipple (1 Pc.)

## Technical Drawing



## Packaging and Storage:

Diameter: 116 mm Len: 42 mm  
Weight: 1.24 Kg

### Package Contents:

- Transfer Cap (1 Pc.)

## DIMENSIONS

	E
TC-22	2¼"
TC-23	3¼"

E: ACME

# LTF Series Transfer Cap

LTF Series Caps are specially designed to safely seal the connection points in liquid filling/discharge systems of transport, spherical, and stationary LPG tanks. They are produced with high safety standards to prevent gas leaks when the system is not in use.

<b>Connection</b>	ACME
<b>Working Pressure</b>	17.5 Bar
<b>Material</b>	Forged Brass

## General Features

**Secure Sealing & Protection:** Specially designed to provide a tight seal for the transfer nipple after filling operations. It prevents dirt entry and gas leakage, ensuring maximum system safety.

**Durable and Reliable Material:** The forged brass structure offers higher pressure resistance compared to cast brass materials. It also possesses high corrosion resistance thanks to its brass structure.

# LTF Series Transfer Adapter

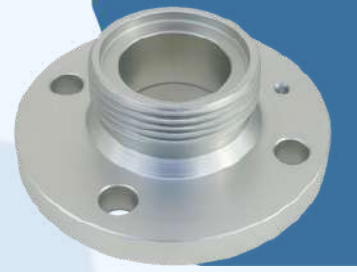
# ... Series Welded Transfer Flange



TA-02



WTF-01



LTF Series adapters are designed to connect 3 1/4" transfer nipples in transport vehicles, spherical, and stationary LPG tanks to 1 1/4" drum hose end valves. They ensure a secure connection during LPG filling and discharge operations.

Welded Transfer Flange is specially designed to perform LPG supply operations in liquid filling/discharge systems of transport, spherical, and stationary LPG tanks. Designed to provide minimum flow restriction, the WTF Series flanges offer maximum efficiency in filling and discharge processes.

<b>Connection</b>	Inlet ACME ; Outlet ACME
<b>Working Pressure</b>	17.5 Bar
<b>Material</b>	Forged Brass and Steel

<b>Connection</b>	Inlet DN ; Outlet ACME
<b>Working Pressure</b>	17.5 Bar
<b>Material</b>	Steel

## General Features

**Maximum Flow Efficiency:** Specially designed for LPG supply to provide minimum flow restriction, ensuring high efficiency in filling and discharge operations.

**Compatibility:** Enables the connection of 3 1/4" transfer nipples to 1 1/4" drum hose end valves, increasing compatibility between systems.

**Operational Efficiency:** Supports operational efficiency in the field with its durable structure and easy installation capability.

**High Sealing Performance:** Thanks to NBR gaskets, it ensures superior sealing during supply operations and prevents gas leakage.

## General Features

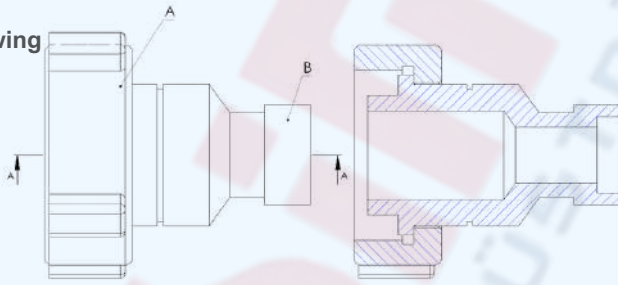
**Maximum Flow Efficiency:** Specially designed for LPG supply to provide minimum flow restriction, ensuring high efficiency in filling and discharge operations.

**Durable and Reliable Material:** All body and connection parts are manufactured entirely from steel. This structure offers high mechanical strength and ensures long-lasting performance in harsh operating conditions.

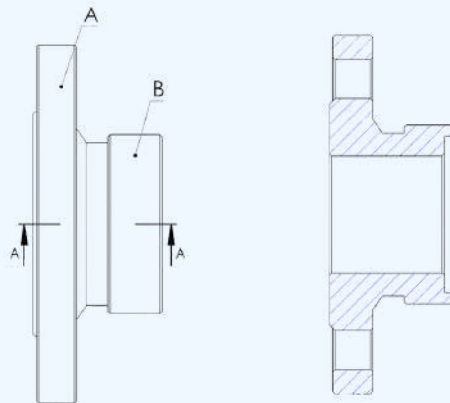
**Safe Product Discharge:** Safely discharges the product remaining in the system after LPG transfer, thanks to the integrated purge valve.

**High Sealing Performance:** Thanks to NBR gaskets, it ensures superior sealing during supply operations and prevents gas leakage.

## Technical Drawing



## Technical Drawing



## DIMENSIONS

	A	
TA-02	3 1/4"	1 1/4"

A: ACME B: NPT

## Packaging and Storage:

Dia: 87.5 mm Len: 110 mm

Weight: 2.44 Kg

## Package Contents:

Transfer Adapter (1 pc.)

## Packaging and Storage:

Dia: 165 mm Len: 60.5 mm

Weight: 3.4 Kg

## Package Contents:

Welded Transfer Flange (1 pc.)

## DIMENSIONS

	A	B
TF-01		

A: ACME B: NPT

# LTF Series LPG Transfer Set



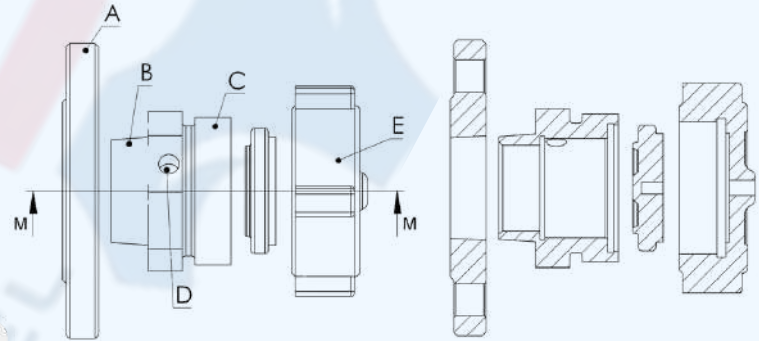
## LTF-22

The LTF Series set is specially designed to perform LPG supply operations in liquid filling/discharge systems of transport, spherical, and stationary LPG tanks. It is produced with high safety standards to prevent gas leaks that may occur during supply operations. Additionally, designed to provide minimum flow restriction, the LTF Series adapters offer maximum efficiency in filling and discharge processes.

<b>Connection Flange</b>	DIN 2533- 2545
<b>Connection</b>	Inlet DN ; Outlet ACME
<b>Working Pressure</b>	17.5 Bar
<b>Test Pressure</b>	26.5 Bar
<b>Manometer</b>	-20 / +65° C

<b>Working Temperature</b>	Brass Cap-Nipple, Flange Steel
<b>Sealing</b>	NBR
<b>Purge Valve</b>	R 1/4" Female Thread

### Technical Drawing



### General Features

**Maximum Flow Efficiency:** Specially designed for LPG supply to provide minimum flow restriction, ensuring high efficiency in filling and discharge operations.

**High Sealing Performance:** Thanks to NBR gaskets, it ensures superior sealing during supply operations and prevents gas leakage.

**Durable and Reliable Material:** The forged brass cap and nipple structure offer higher pressure resistance compared to cast brass materials. It also possesses high corrosion resistance thanks to its brass structure.

**Safe Product Discharge:** Safely discharges the product remaining in the system after LPG transfer, thanks to the integrated purge valve.

### DIMENSIONS

	A	B	C	D	E
LTF-22	2"	1¼"	2¼"	¼"	2¼"
LTF-23	2"	2"	3¼"	¼"	3¼"

A-B: NPT C-E: ACME

Usage Areas:

LPG

### Packaging and Storage:

Width: 165 mm Length: 125 mm Height: 165 mm Weight: 5.4 Kg

### Box Contents:

- Transfer Flange (1 Pc.)
- Nipple (1 Pc.)
- Cap (1 Pc.)
- Gasket and Washer (1 Pc.)

# GR Series Grounding Reel



## MGR - 1

The Grounding Reel is developed for safe operation in hazardous environments such as LPG and fuel tankers, and vehicles transferring flammable substances. It provides a safe working environment by reducing the risk of static discharge in environments where flammable and dangerous substances are transferred. With its manual winding system, it offers an economical and user-controlled solution.

<b>Winding Mechanism</b>	Manual
<b>Cable Length</b>	Insulated 25m
<b>Protection Class</b>	IP55
<b>Clamp</b>	Brass
<b>Material</b>	Galvanized Steel

### Product Image



### General Features

**Grounding Safety:** Safely conducts static electricity to the ground, reducing the risk of sparks, thus providing safe working conditions in flammable and explosive environments.

**Winding Mechanism:** The manual winding system allows the user to collect the cable by hand control, providing an economical use with low maintenance requirements.

**Conductive Hardware:** The 25-meter insulated cable and high-conductivity brass clamp create a reliable and effective grounding connection, ensuring efficient static discharge.

**Body Structure:** The rust-resistant cold galvanized coating body offers long-lasting use in harsh environmental and weather conditions, reducing the need for maintenance.

**Design:** Its compact, robust, and ergonomic structure offers easy mounting in narrow spaces and provides a user-friendly experience.

**Protection Class:** It is resistant to dust and water splashes with its IP55 protection class, making it safe to use in open areas and harsh industrial environments.



Usage Areas:

LPG

### Packaging and Storage:

Width: 110 mm Length: 330 mm Height: 315 mm  
Weight: 7.25 Kg

### Box Contents:

- Manual Grounding Reel (1 Pc.)

# GR Series Automatic Grounding Reel



## AGR - 1

The Automatic Grounding Reel is developed for safe operation in hazardous environments such as LPG and fuel tankers, and vehicles transferring flammable substances. It provides a safe working environment by reducing the risk of static discharge in environments where flammable and dangerous substances are transferred. Thanks to its pneumatic winding system, it ensures the cable is collected neatly and effortlessly. The product is made of Galvanized Steel material.

<b>Winding Mechanism</b>	Automatic
<b>Cable Length</b>	Insulated 25 m
<b>Protection Class</b>	IP55
<b>Clamp</b>	Brass
<b>Material</b>	Galvanized Steel



Product Image



### General Features

**Grounding Safety:** Safely conducts static electricity to the ground, reducing the risk of sparks, thus providing safe working conditions in flammable and explosive environments.

**Winding Mechanism:** The pneumatic automatic winding system ensures the cable is collected effortlessly and neatly, saving time and offering ease of use.

**Conductive Hardware:** The 25-meter insulated cable and high-conductivity brass clamp create a reliable and effective grounding connection, ensuring efficient static discharge.

**Body Structure:** The rust-resistant cold galvanized coating body offers long-lasting use in harsh environmental and weather conditions, reducing the need for maintenance.

**Design:** Its compact, robust, and ergonomic structure offers easy mounting in narrow spaces and provides a user-friendly experience.

**Protection Class:** It is resistant to dust and water splashes with its IP55 protection class, making it safe to use in open areas and harsh industrial environments.

Usage Areas: 

### Packaging and Storage:

Width: 150 mm Length: 330 mm Height: 350 mm  
Weight: 13.20 Kg

### Box Contents:

- Automatic Grounding Reel (1 Pc.)

# GR Series Emergency Stop Grounding Reel

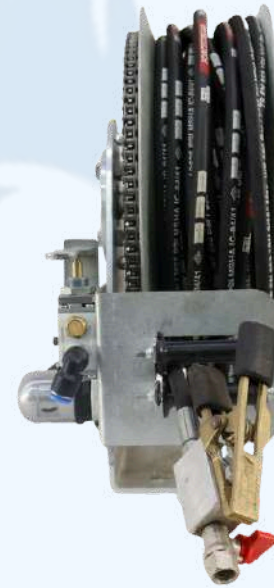


## ESGR - 1

The Emergency Stop Grounding Reel is developed for safe operation in hazardous environments such as LPG and fuel tankers, and vehicles transferring flammable substances. It automatically stops the supply operation by detecting static electricity accumulation, thus ensuring maximum safety. Its pneumatic winding system allows the cable to be collected neatly and effortlessly.

<b>Winding Mechanism</b>	Automatic
<b>Cable Length</b>	Insulated 25m
<b>Protection Class</b>	IP55
<b>Clamp</b>	Brass
<b>Material</b>	Galvanized Steel

### Product Image



### General Features

**Grounding Safety:** Safely conducts static electricity to the ground, reducing the risk of sparks, thus providing safe working conditions in flammable and explosive environments.

**Advanced Safety System:** Thanks to its static electricity detection and emergency stop feature, it detects dangerous electricity accumulation and automatically stops the supply operation.


**Winding Mechanism:** The automatic winding system ensures the cable is collected effortlessly and neatly, saving time and offering ease of use.

**Conductive Hardware:** The 25-meter insulated cable and high-conductivity brass clamp create a reliable and effective grounding connection, ensuring efficient static discharge.

**Body Structure:** The rust-resistant cold galvanized coating body offers long-lasting use in harsh environmental and weather conditions, reducing the need for maintenance.

**Design:** Its compact, robust, and ergonomic structure offers easy mounting in narrow spaces and provides a user-friendly experience.

**Protection Class:** It is resistant to dust and water splashes with its IP55 protection class, making it safe to use in open areas and harsh industrial environments.

Usage Areas: 

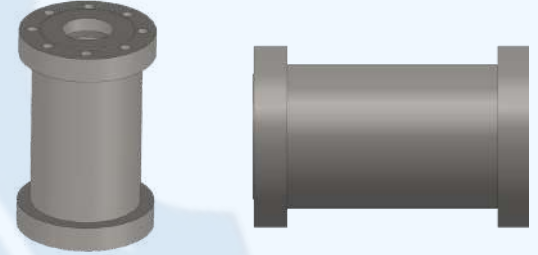
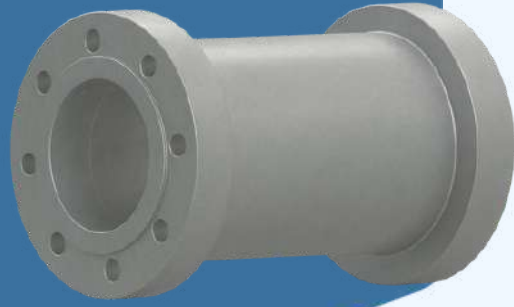
### Packaging and Storage:

Width: 170 mm Length: 400 mm Height: 400 mm  
Weight: 18.64 Kg

### Box Contents:

- Emergency Stop Grounding Reel (1 Pc.)

# HV Series Hydraulic Valve Sleeve



HVB-02

The hydraulic valve sleeve provides flexibility and easy access in field applications by enabling the mounting of hydraulic valves directly onto the pipeline instead of the tank. In this way, both assembly and maintenance operations become safer and more practical.

SIZE	A	B	C	D	E	F	H	I	J	K	L	M	N	P	R	S	T		U		Bolt Hole	
																	MIN.	MAX.	MIN.	MA	Qty	Bolt Size
2"	165	127	109	94	1,5	21	30	165	127	109	53	1,5	21	30	17	239	116	122	6	X.	8	5/8"
3"	210	168	145	113	1,5	26	40	210	168	145	78	1,5	26	40	21	245	140	154	6	8.8	8	3/4"
4"	254	200	175	150	1,5	30	45	254	200	175	102	1,5	30	45	23	330	190	200	6	8	8	3/4"
6"	318	270	245	203	1,5	35	45	318	270	245	154	1,5	35	45	27	360	244	255	7	10	10	3/4"
8"	381	330	300	236	1,5	35	50	381	330	300	203	1,5	35	50	27	400	330	345	12	14	14	7/8"
10"	445	387	355	295	1,5	40	50	445	387	355	260	1,5	40	50	28	470	330	345	12	14	14	1"
12"	521	451	385		1,5	40	50	521	451	385	303	1,5	40	50	28	550			12	14	14	1 1/4"
14"	585	520	480	427	1,5	40	55	585	520	480	350	1,5	40	55	29	610	457	508	12	15	15	1 1/4"

<b>Nominal Diameter</b>	DN 50-DN 350
<b>Connection Flange</b>	DIN 2533-2545 / ASME B16.5 RF
<b>Test Pressure</b>	30 Bar
<b>Working Temperature</b>	-20 / +65° C
<b>Material</b>	Steel

### General Features

**Compatible Design:** Designed to be fully compatible with EFHV series hydraulic valves with excess flow valves.

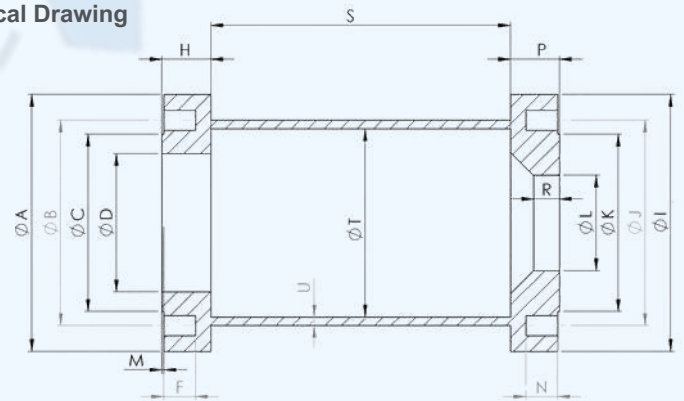
**Robust Material Structure:** Its steel construction ensures high strength and is long-lasting against external effects.

**Flexible Mounting Capability:** Allows the valve to be mounted on the pipeline at the desired location outside the tank.

**Easy Access and Maintenance:** Since the valve is positioned externally, maintenance and service operations can be performed quickly and safely.

**Application Flexibility:** Optimizes valve placement according to the field design, providing operational convenience. Compatible with both stationary and mobile LPG systems.

### Technical Drawing




### Box Contents:

- Hydraulic Valve Sleeve (1 Pc.)

Usage Areas: 

### Packaging and Storage:

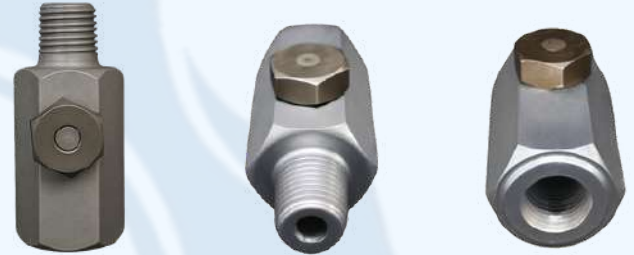
You can contact us for detailed information!

✉ [teknik@simset.com.tr](mailto:teknik@simset.com.tr)  
 [www.simset.com.tr](http://www.simset.com.tr)

# FP Series Fusible Plug



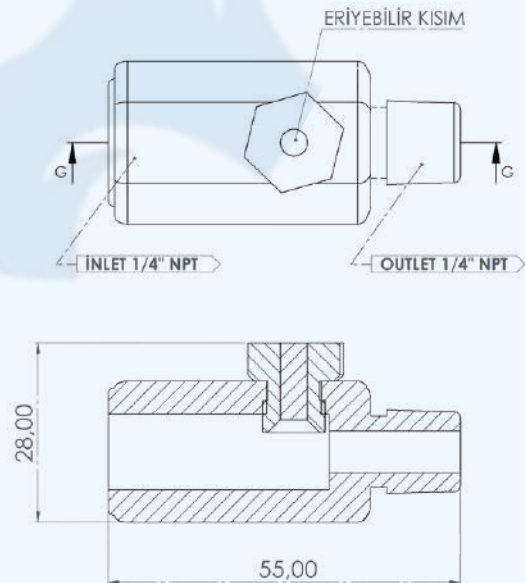
FP-14



The Fusible Plug, developed to ensure the safe and automatic closing of hydraulic valves located on LPG lines in the event of a fire, offers high security, rapid response, and long-lasting performance thanks to its special alloy compliant with ISO/DIS 10294-4:1999 and ADR 6.8 standards. It provides an effective solution to the safe closing problem where existing techniques fall short. The material is Alloy and Steel.

<b>Connection</b>	Inlet 1/4" NPT ; outlet 1/4" NPT
<b>Working Pressure</b>	25 Bar
<b>Test Pressure</b>	40 Bar
<b>Melting Temperature</b>	95°C - 103°C
<b>Design Standard</b>	ISO/DIS 10294-4:1999 - ADR 6.8

## Technical Drawing



### General Features

**Critical Usage Area:** Designed to be used with hydraulic valves located on liquid filling/discharge lines of transport, spherical, and stationary LPG tanks.

**Automatic Closing in Case of Fire:** A heat-sensitive safety device that ensures the automatic and reliable closing of valves during a fire.

**Special Fusible Alloy:** Uses a special alloy that melts in the 95°C-103°C range, compliant with ISO/DIS 10294-4:1999 and ADR 6.8 standards.

**High Response Sensitivity:** Provides rapid and accurate response to fire thanks to its thermal threshold range, enabling the system to close without delay.

**Closes Security Gap:** Developed against the problem of insufficient temperature sensitivity in common products on the market, offering high security and system integrity.

**Long Life and Durability:** Suitable for long-term use and resistant to external factors thanks to the material structure used.

Usage Areas:



### Packaging and Storage:

Width: 28 mm Length: 55 mm Height: 25 mm  
Weight: 0.130 Kg

### Box Contents:

- Fusible Plug (1 Pc.)

# TFS Series Tanker Meter and Pump System



## TFS - 1

The Tanker Meter and Pump System we developed for LPG tankers ensures the complete renewal of vehicles with a comprehensive revision package. All processes, from the installation and assembly of the meter and pump plumbing to chassis replacement, sandblasting and painting, and the renewal of PID diagrams, are carried out from a single source and in full compliance with ADR regulations. Our company holds a Ministry-approved inspection center and repair-modification authorization certificate, documenting all transactions officially and providing full assurance for future inspections of the vehicles. Our system is projected to be adaptable to every brand and model of meter and pump; it is integrated into different vehicle types with electric, PTO-driven, or hydraulic system solutions. Thanks to the control infrastructure we developed, supply operations are managed from a single point, while maximum safety is ensured by immediately stopping the supply process with the emergency stop feature activated in emergencies.

<b>Pump Drive</b>	PTO / Hydraulic / Electric
<b>Emergency Stop System</b>	+
<b>Standard</b>	ADR

### Product Image



### General Features

**Comprehensive Revision:** Meter and pump plumbing installation and assembly, chassis replacement, sandblasting-painting, and renewal of PID diagrams are carried out from a single source.

**Official Competence:** Our company owns a Ministry-approved inspection center and repair-modification authorization certificate; all transactions are documented officially.

**Compatibility:** Projecting can be done suitably for every brand and model of meter and pump.

**Working Options:** Electric or PTO-driven solutions for trucks, and hydraulic system solutions for trailers can be applied.

**Control Infrastructure:** Supply operations are managed from a single point; the process is stopped immediately in emergencies with the integrated emergency stop feature.

**Safety and Durability:** Vehicles are made long-lasting, safe, and ready for inspections through operations performed in full compliance with ADR regulations.

### Packaging and Storage:

You can contact us for detailed information!

✉ [teknik@simset.com.tr](mailto:teknik@simset.com.tr)  
 🌐 [www.simset.com.tr](http://www.simset.com.tr)

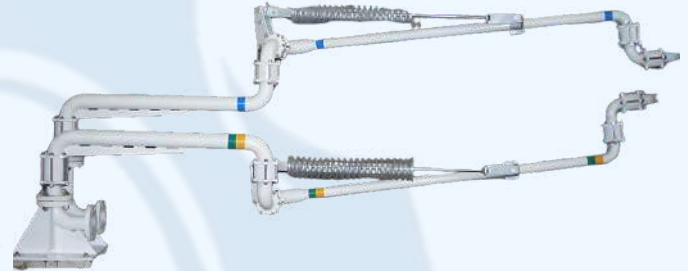


Usage Areas: 

### Box Contents:

- Complete Filling System (1 Pc.)

# LA Series Loading - Unloading Arm



## LA - 1

The LPG Loading-Unloading Arm (Loading-Arm) has been developed to eliminate the safety risks created by the wear and tear of hoses used during LPG supply over time, as well as the difficulties in transport and connection. With its hose-free structure, full sealing, and ergonomic design, it offers a safe, practical, and long-lasting LPG transfer solution. Thanks to its 360° movement capability, adjustable connection height, and low maintenance requirement, it provides easy and safe operation with a single person.

<b>Connection</b>	1/4" NPT ; Outlet 1/4" NPT
<b>Working Pressure</b>	25 Bar
<b>Test Pressure</b>	40 Bar
<b>Melting Temperature</b>	95°C - 103°C
<b>Design Standard</b>	ISO/DIS 10294-4:1999 - ADR 6.8
<b>Pump Drive</b>	PTO / Hydraulic / Electric
<b>Emergency Stop System</b>	+
<b>Standard</b>	ADR

### Product Image



### General Features

**Hose-free Design:** Eliminates the need for hoses thanks to the flexible arm system, providing a safe and organized working environment.

**Full Sealing:** Gas leaks are prevented with the special sealing structure used in the joints, offering high safety.

**Easy Use:** Can be operated comfortably by a single person; does not impose extra effort on the user thanks to its ergonomic structure.

**360° Movement Capability:** 5 rotary sealing joints located on the two arms offer loading and unloading possibilities from every direction.

**Height Adjustment:** Height adjustment between 330 mm and 2000 mm can be made at the connection tip with optional spring balances, providing easy adaptation to different vehicles and equipment.

**Lifting Capacity:** The lifting capacity at the connection tip can be adjusted between 5 kg and 50 kg, offering precise and controlled connection.

**Durable Material and Low Maintenance:** Since it is produced with standard materials, there is no need for spare part stocking; chrome-plated joint inner surfaces are resistant to wear and corrosion.

**Space Saving:** Does not take up space in the waiting position thanks to the special support system (support), ensuring organized space usage.

**Environmental Protection:** Dust-holding O-rings on the flanges prevent water and dust from entering the joint, ensuring long-lasting use.

### Packaging and Storage:

You can contact us for detailed information!

✉ [teknik@simset.com.tr](mailto:teknik@simset.com.tr)  
 🌐 [www.simset.com.tr](http://www.simset.com.tr)

Usage Areas: 

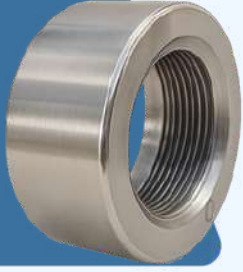
### Note:

- Crate: Width: 1000 Length: 2500 Height: 1000

### Box Contents:

- Loading - Unloading Arm (1 Pc.)

# SVN Series Ventil Nozzle



SVN-03

The Ventil Nozzle is specially developed for the assembly of safety valves in tank systems. It offers reliable and long-lasting use with its design suitable for welded connection, thread structure compatible with valves, and durable material quality.

<b>Connection</b>	2" / 3"
<b>Working Pressure</b>	17.5 Bar
<b>Test Pressure</b>	26.5 Bar

## General Features

**Size Options:** Offers flexibility suitable for system requirements with 2" and 3" variations.

**Material Compatibility:** Produced from the same material as the tank sheet metal to ensure compatibility and longevity. The risk of corrosion is eliminated, and long-lasting usage is guaranteed.

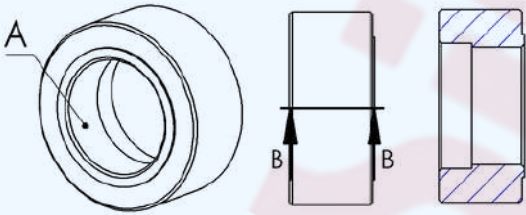
**Weld Bevel Preparation:** Ready-made weld bevels accelerate assembly and increase workmanship quality.

**Thread Structure:** Internal threads cut in accordance with standards ensure a perfect fit and leak-tightness during assembly.

**Durability:** Its high-strength structure increases safety and reduces the need for maintenance.

**Area of Use:** Specially developed for valve mounting.

## Technical Drawing



## DIMENSIONS

	A
SVN-02	2"
SVN-03	3"

A: NPT

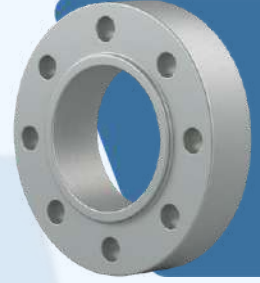
## Packaging and Storage:

You can contact us for detailed information!

- Ventil Nozzle (1 pc.)

✉ [teknik@simset.com.tr](mailto:teknik@simset.com.tr)  
 🌐 [www.simset.com.tr](http://www.simset.com.tr)

# HVN Series Valve Nozzle



HVN-03

The Hydraulic Valve Nozzle is specially developed for the installation of hydraulic valves in tank systems. It offers safe and long-lasting usage with its design suitable for welded connections, mounting holes compatible with valve flanges, gasket surface, and durable material quality.

<b>Connection</b>	2" / 3"
<b>Working Pressure</b>	17.5 Bar
<b>Test Pressure</b>	26.5 Bar

## General Features

**Size Options:** Offers flexibility suitable for system requirements with 2" and 3" variations.

**Material Compatibility:** Produced from the same material as the tank sheet metal to ensure compatibility and longevity.

**Weld Bevel Preparation:** Ready-made weld bevels accelerate assembly and increase workmanship quality.

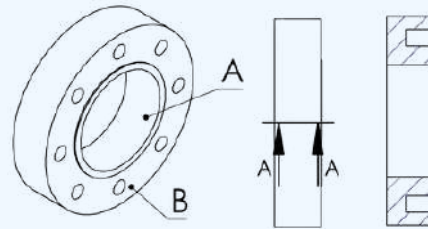
**Mounting Holes:** Designed to provide a perfect fit with the hydraulic valve flange.

**Gasket Surface:** Machined in accordance with the hydraulic valve gasket surface and guarantees leak-tightness.

**Durability:** Its high-strength structure increases safety and reduces the need for maintenance.

**Area of Use:** Specially developed for hydraulic valve mounting.

## Technical Drawing



## DIMENSIONS

	A	B
HVN-02	2"	2"
HVN-03	3"	3"

B: DIN 2533-2545 / ASME B 16.5 RF

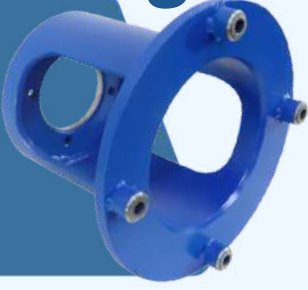
## Packaging and Storage:

You can contact us for detailed information!

- Valve Nozzle (1 pc.)

✉ [teknik@simset.com.tr](mailto:teknik@simset.com.tr)  
 🌐 [www.simset.com.tr](http://www.simset.com.tr)

# HRH Series H. Motor-LPG Pump Bell Housing



HRH-1

The Hydraulic Reducer Housing is a durable connection element designed to couple the hydraulic pump/motor with the LPG pump in LPG filling and discharging systems. By offering reliable performance in power transmission, it contributes to the efficient and uninterrupted operation of the system. The product connection structure is "LPG Pump ; Hydropump", and the product is made of steel material.

### General Features

**Material:** Manufactured from high-strength steel, suitable for heavy-duty operating conditions.

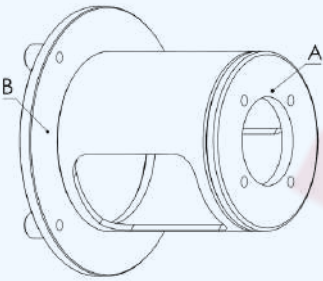
**Function:** Provides a coupled connection between the hydraulic pump/motor and the LPG pump.

**Durability:** Resistant to deformation under vibration, pressure, and load.

**Application Area:** LPG tankers and filling-discharging systems.

**Ease of Assembly:** Practical assembly capability with standard connection holes and precision-machined surfaces.

### Technical Drawing



### DIMENSIONS

	A	B
HRH-01	HPump	LPG pump

### Box Contents:

- Reducer Housing (1 Pc.)

### Packaging and Storage:

Diameter: 250 mm Length: 220 mm  
Weight: 7.45 Kg

# MM Series Pressure Gauge



MM

Possessing a high-precision and durable structure, this glycerin/silicone-filled pressure gauge offers reliability, long life, and clear readability for pressure measurement in harsh industrial environments. It provides ideal solutions in petrochemical, mining, machinery manufacturing, hydraulic, and pneumatic systems.

<b>Filling Liquid</b>	Glycerin
<b>Dial Diameter</b>	Ø63, Ø100, Ø160
<b>Pressure Measurement Range</b>	0,6 / 1000 bar
<b>Accuracy</b>	± %1,0 (CL 1,0)
<b>Standard</b>	EN 837-1

# TM Series Thermometer

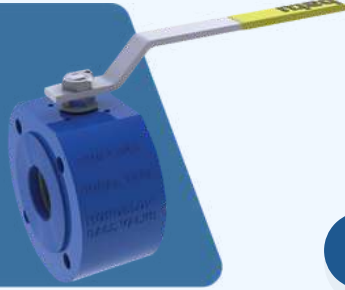
TM

Standing out with its stainless steel body, wide temperature range, and durable structure, this industrial thermometer provides reliable, long-lasting, and precise temperature measurement in HVAC systems, machinery manufacturing, and pressure vessel applications.



<b>Temperature Measurement Range</b>	-30 °C / +120 °C
<b>Dial Diameter</b>	Ø63, Ø100
<b>Accuracy</b>	± %2 (CL 2,0)
<b>Standard</b>	EN 13190
<b>Additional standards</b>	ISO/DIS 10294-4:1999 - ADR 6.8

# MBV Series Monoblock Valve



MBV-50

The Monoblock Valve is a reliable and economical solution available in 2-way and 3-way options, manufactured from carbon or stainless steel. Thanks to its compact structure, high leak-tightness, ease of assembly, and actuator compatibility, it is especially preferred in installations with limited space that require quick opening and closing.

<b>Ball Material</b>	1.4086 / 1.4301 / 1.4401
<b>Connection</b>	DIN 2545 - 2635 ASME B16.5
<b>Working Temperature</b>	-29° C / + 180°
<b>Sealing</b>	Teflon, Burgmann, Viton O-Ring
<b>Body Material</b>	Forged Steel, Stainless Steel

## General Features

**Monoblock valves** are ball valves suitable for LPG, chemical, and industrial fluids. They feature a carbon or stainless steel body, full bore, flanged connection, and are available in two-way or three-way options. Operating within a temperature range of -30°C to +250°C and pressure classes of PN16-40, they are compatible with ISO 5211 actuators and hold Fire Safe, ATEX, and CE certifications.

Pn40	A	Flange Size
DN 15	15	1/2"
DN 20	20	3/4"
DN 25	25	1"
DN 32	32	1 1/4"
DN 40	40	1 1/2"
DN 50	50	2"
DN 65	65	2 1/2"
DN 80	80	3"
DN 100	100	4"
DN 125	125	5"
DN 150	150	6"
DN 200	200	8"
DN 250	250	10"
DN 300	300	12"

## Packaging and Storage:

Please contact us for detailed information!

teknik@simset.com.tr  
www.simset.com.tr

## Dimensions:

DN 15 / 150 - BS 6755

## Box Contents:

Monoblock Valve (1 Pc.)

Usage Areas: 

# NBV Series Natural Gas Ball Valve



NBV-50

Natural Gas Ball Valves provide a safe and efficient solution for natural gas installations by offering high leak-tightness, reliable control, and long service life.

<b>Ball Material</b>	1.4086 / 1.4301 / 1.4401
<b>Connection</b>	DIN 2533 - 2545
<b>Working Temperature</b>	-29° C / + 180°
<b>Sealing</b>	Teflon, Viton O-Ring
<b>Body Material</b>	Cast Steel - Ductile Iron

## General Features

**Ball Valves:** Offer safe, long-lasting, and practical usage in natural gas lines with their durable body structure, high leak-tightness, quick opening-closing capability, actuator compatibility, compact design, and production in accordance with standards.

## Packaging and Storage:

Please contact us for detailed information!

teknik@simset.com.tr  
www.simset.com.tr

## Dimensions:

TS 9809 / TS EN 331

## Box Contents:

Ball Valve (1 Pc.)

Usage Areas: 

Pn40	A	Flange Size
DN 15	15	1/2"
DN 20	20	3/4"
DN 25	25	1"
DN 32	32	1 1/4"
DN 40	40	1 1/2"
DN 50	50	2"
DN 65	65	2 1/2"
DN 80	80	3"
DN 100	100	4"
DN 125	125	5"
DN 150	150	6"
DN 200	200	8"
DN 250	250	10"
DN 300	300	12"

# SH Series

## Long Chrome Hinge



LSH-1



SSH-1



# SH Series

## Short Chrome Hinge

The Long Chrome Hinge can be used in the filling cabinets of LPG tankers and various industrial cover systems. With its stainless chrome material, it provides resistance to durability and environmental conditions. Its wide surface and long structure offer extra load-carrying capacity for heavy covers.

Hole Diameter	M8
Material	Stainless Steel
Opening Angle	170°

### General Features

**Size:** The long version ensures maximum sturdiness in heavy covers with its wide surface.

**Material:** Stainless chrome steel is corrosion-resistant and long-lasting.

**Area of Use:** LPG tanker filling cabinets, industrial doors, large cabinets, and heavy-lid systems.

**Ease of Assembly:** Offers easy and fast assembly capability thanks to its pre-drilled structure.

**Durability:** High resistance against harsh environmental conditions, impact, and vibration.

**Aesthetic Appearance:** Both functional and stylish with its bright chrome surface.

### Product Image



### Packaging and Storage and Box Content:

Width: 79 mm Length: 104 mm Height: 16 mm • Long Chrome Hinge (1 Pc.)  
Weight: 0.3 Kg

The Short Chrome Hinge can be used in LPG tanker filling cabinets and various industrial cover systems. Developed for use in small and lightweight covers with its compact structure, it offers a practical assembly opportunity in narrow spaces and long life with its stainless chrome material.

Hole Diameter	M8
Material	Stainless Steel
Opening Angle	170°

### General Features

**Size:** The short version is suitable for narrow spaces and lightweight covers with its compact structure.

**Material:** Stainless chrome steel provides protection against rust and ensures a long service life.

**Area of Use:** LPG tanker filling cabinets, small industrial boxes, cabinet doors, and lightweight cover systems.

**Ease of Assembly:** Practical installation with pre-drilled mounting holes.

**Durability:** Structure resistant to environmental effects.

**Aesthetic Appearance:** Clean and professional appearance thanks to chrome plating.

### Product Image



### Packaging and Storage and Box Content:

Width: 58 mm Length: 61.5 mm Height: 16.5 mm • Short Chrome Hinge (1 Pc.)  
Weight: 0.16 Kg



# SIMSET FIRE MANUFACTURING PRODUCTS

# FHR Series Fire Hose Reel



FHR-1

The Fire Hose Winding Reel offers the ability for rapid and uninterrupted intervention during a fire by allowing the hose to be pulled easily in any direction thanks to its 360° rotating reel structure. It provides long-lasting, safe, and functional usage with its durable material and special apparatus capable of carrying the hose and nozzle together.

Fire Hose	2" - 2 3/4"
Rotating Mechanism	360°
Material	Steel

## General Features

- Rotating Reel Mechanism:** Ensures the hose can be pulled in any direction with its 360° axis rotation feature.
- Easy and Fast Use:** Makes it possible to deploy the hose rapidly for instant intervention in a fire.
- Durable Material:** Produced from high-quality steel materials for long-lasting usage.
- Hose and Nozzle Carrying Capability:** The fire nozzle can be carried along with the hose thanks to its special apparatus.
- Maintenance Ease:** Extends hose life by allowing the hose to be deployed and wound in an orderly manner.

## Product Image



Usage Areas:

## Packaging and Storage:

Please contact us for detailed information!

- Fire Hose Reel (1 Pc.)

✉ [teknik@simset.com.tr](mailto:teknik@simset.com.tr)  
 🌐 [www.simset.com.tr](http://www.simset.com.tr)

# FH Series Fire Hydrant



FH-1

The Fire Hydrant ensures a reliable water supply during a fire with its steel body and durable structure. Thanks to the 2" valves and couplings on it, hose assembly is easy, offering a wide range of use from industrial facilities to residential areas.

Connection	Inlet DN100 ; Outlet 2"
Working Pressure	16 Bar
Material	Steel

## General Features

- Fire Valves:** Equipped with two 2" fire valves, offering easy opening and closing capability.
- Connection Coupling:** Coupling connections are available on the valves for the fast and safe assembly of standard fire hoses.
- Mounting Flange:** Provides a leak-tight and secure connection in DN 100 PN 16 standard.
- Pressure Resistance:** Designed to operate safely against high water pressure.
- Corrosion Resistance:** The outer surface is coated with protective paint to provide long-term resistance against rust.
- Practical Design:** Optimized for easily accessible, rapid intervention.

## DIMENSIONS

	A	B
TF-01		

A: ACME B: NPT

Usage Areas:

## Packaging and Storage:

Please contact us for detailed information!

- Fire Hydrant (1 Pc.)

✉ [teknik@simset.com.tr](mailto:teknik@simset.com.tr)  
 🌐 [www.simset.com.tr](http://www.simset.com.tr)

# WM Series Water-Foam Monitor

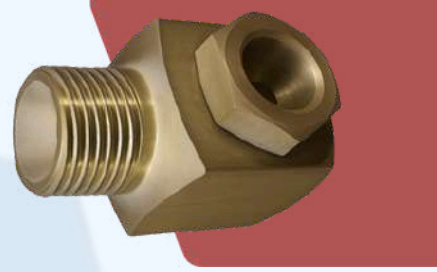
# SN Series Sprinkler Nozzle



WM-1



SN-1



Water and Foam Monitors provide the ability to intervene effectively in fires from different angles. While foam monitors offer horizontal and vertical control of high-capacity flow, water monitors can be easily directed to wide areas thanks to their 360° rotation feature.

The Sprinkler Nozzle covers the entire area where it is located by spraying pressurized water in a rain-like manner during a fire. It cuts off the contact of the flame with oxygen, providing rapid and effective extinguishing. It is one of the indispensable parts of fire safety systems. The product material is "Brass".

<b>Connection</b>	Inlet 2½" ; Outlet 2½"
<b>Max - Min. Working Pressure</b>	16 Bar - 5 Bar
<b>Rotating Mechanism</b>	360°

<b>Connection</b>	½" / ¾"
<b>Working Pressure</b>	16 Bar
<b>Sprinkling Diameter</b>	2400 mm

**General Features**

**Multi-Directional Operation:** Foam monitors effectively direct high-capacity foam flow to wide areas. Water monitors direct a powerful water stream to the target zone from a safe distance.

**Range of Motion:** Possesses a 120° vertical operating angle. It rotates 360° around its own axis, providing the ability to intervene in every direction.

**Durable Body:** Manufactured from special alloy aluminum; resistant to 25 kg/cm<sup>2</sup> pressure and protected against corrosion.

**Sealing:** High leak-tightness is ensured in moving connections by O-rings with ball bearings.


**Ease of Assembly:** Can be securely mounted to fixed points or is suitable for portable use.


**General Features**

- **Coverage Area:** Covers a wide area by spraying in a rain-like form with a diameter of 2400 mm.
- **Fire Extinguishing Effect:** Provides rapid extinguishing by cutting the connection between the flame and oxygen.
- **Areas of Use:** Suitable for all enclosed spaces where water-based systems are used for fire safety.
- **Material:** Manufactured from brass material for high corrosion resistance.
- **Working Pressure:** Resistant to a maximum pressure of 16 bar.
- **Mounting Sizes:** Available in ¾" and 1/2" threaded options.
- **Spray Pattern:** Provides effective protection by distributing pressurized water in an umbrella shape.

**Product Image**



Usage Areas: 

Usage Areas: 

**DIMENSIONS**

	A	B
TF-01		

A: ACME B: NPT

**Packaging and Storage:**

Please contact us for detailed information!  
 • Water-Foam Monitor (1 Pc.)  
 ✉ [teknik@simset.com.tr](mailto:teknik@simset.com.tr)  
 🌐 [www.simset.com.tr](http://www.simset.com.tr)

**Packaging and Storage:**

Please contact us for detailed information!  
 • Sprinkler Nozzle (1 Pc.)  
 ✉ [teknik@simset.com.tr](mailto:teknik@simset.com.tr)  
 🌐 [www.simset.com.tr](http://www.simset.com.tr)

# MFT Series Foam Trailers



MFT-1

The Foam Trailer is a high-capacity and reliable piece of equipment offering mobile solutions in fire extinguishing systems. It is effectively used especially in industrial facilities, storage areas, power plants, and high fire risk zones. Equipment cabinets located on the trailer allow for the orderly storage of fire hoses and nozzles and enable rapid deployment when needed. Thanks to its axle and wheel system, it can be easily transported and rapidly dispatched to different locations. Stabilizing legs deployed during use provide the trailer with a safe and balanced stance. With its durable structure, practical design, and high performance, the Foam Trailer offers a vital solution in every area requiring rapid response in fire safety systems.

<b>Tank Capacity</b>	525 L
<b>Hose Capacity</b>	2" - 2 Pcs.
<b>Material</b>	Stainless Steel / Steel

Product Image



## General Features

**Foam Capacity:** Provides long-duration intervention capability with a 525 liter foam liquid storage capacity.

**Tank Material:** The foam tank is manufactured from AISI 304 quality stainless steel, offering high durability and corrosion resistance.

**Body and Components:** All components other than the tank are manufactured from steel material, ensuring sturdy and long-lasting usage.

**Equipment Cabinets:** Side cabinets located on the trailer ensure fire hoses and nozzles are kept organized and ready for use.

**Mobile Use:** Can be easily transported and quickly dispatched to the desired point thanks to its axle and wheel system.

**Stabilizing Legs:** Ensures a safe and balanced stance thanks to stabilizing legs deployed during operation.

Usage Areas:



## Packaging and Storage:

Please contact us for detailed information!

- Foam Trailer (1 Pc.).

✉ [teknik@simset.com.tr](mailto:teknik@simset.com.tr)  
 🌐 [www.simset.com.tr](http://www.simset.com.tr)



# SIMSET MARINE MANUFACTURING PRODUCTS

# SB Series Ship Buoy



SB-1

The Ship Buoy is one of the most critical elements of safety and durability in the maritime sector. These structures, which ensure the flexibility and stability of all types of structures anchored at sea, are manufactured using high-strength materials and a meticulous production process. The ship buoys produced by our company are manufactured in accordance with Turk Loydu approved projects and are specially designed for long-lasting service life. The product material is "Grade A Steel."

## Product Image

Dimensions	Ø3000 - 3800 mm
Protection	Paint / Cathodic Protection
Project Approval	Turk Loydu



## General Features

**Material Quality:** Manufactured from Grade A shipbuilding steel. It ensures high strength and guarantees long-lasting use.

**Project Approval:** Turk Loydu project approved. Production is carried out in compliance with international standards.

**Internal Structure:** The buoy possesses a four-chamber internal design. A safe structure that prevents sinking in the event of potential damage.

**Production Dimensions:** Production can be carried out in various diameters ranging from 3000 mm to 3800 mm. Manufacturing in custom dimensions according to needs is possible.

**Surface Protection:** A special paint system suitable for marine conditions is applied. It is coated with paint that is highly resistant to saltwater.

**Cathodic Protection:** Cathodic protection is applied to enhance corrosion resistance against seawater. It ensures safety and durability during long-term use.

**Rubber Fender:** Equipped with rubber fenders that provide extra security against impacts and friction.

## DIMENSIONS

DIA	Ø3000	Ø3200	Ø3400	Ø3600	Ø3800
-----	-------	-------	-------	-------	-------

Usage Areas:



## Packaging and Storage:

Please contact us for detailed information!

✉ [teknik@simset.com.tr](mailto:teknik@simset.com.tr)  
 🌐 [www.simset.com.tr](http://www.simset.com.tr)

# BD Series Barrier Drum



BD-1

The Barrier Drum is designed for the rapid and safe deployment and retrieval of barriers used in seas, lakes, and other water sources. Drums, which can be produced in different dimensions according to the type and length of the barrier to be stored on them, can be operated with both manual and various power units. Its steel body and hot-dip galvanized coating offer long-lasting use and durability against marine conditions.

### General Features

- Design and Functionality:** Specially designed for the rapid, safe, and systematic deployment and retrieval of barriers.
- Production Dimensions:** Can be manufactured in different dimensions according to the type and length of the barriers to be stored.
- Operating System:** Can be operated with mechanical, electric-hydraulic, or diesel-hydraulic power units.
- Material Quality:** The body is produced from steel material and coated with hot-dip galvanization to increase durability.
- Durability:** Provides long-lasting use thanks to its structure suitable for the marine environment.
- Ease of Use:** Enables both the safe storage and rapid use of inflatable type and fence type barriers.

### Product Image



Usage Areas: 

### Packaging and Storage:

You can contact us for detailed information!

- Barrier Drum (1 pc.)

✉ [teknik@simset.com.tr](mailto:teknik@simset.com.tr)  
 🌐 [www.simset.com.tr](http://www.simset.com.tr)

# FT Series Flasher Top Mark



FT-1

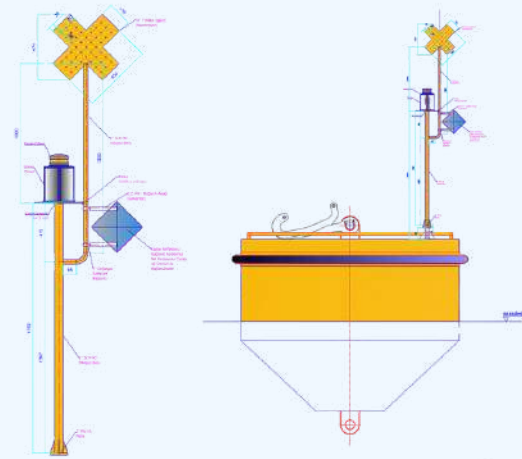


The Flasher Top Mark is special equipment that ensures flashers and reflectors used in buoy systems are mounted in a protected, safe, and visible manner. Top marks manufactured from steel material can be produced according to different dimensions and values, and stand out with their durability suitable for marine conditions.

### General Features

- Design and Functionality:** Ensures that the flasher and reflectors placed on the buoy are visible safely and clearly.
- Material Quality:** Manufactured from high-strength steel material.
- Production Dimensions:** Production can be carried out in different dimensions and values according to needs.
- Protection and Safety:** Makes the flasher and reflector assembly protected against external factors.
- Durability:** Offers long-lasting use thanks to its structure suitable for marine conditions.

### Product Image



Usage Areas: 

### Packaging and Storage:

You can contact us for detailed information!

- Flasher Top Mark (1 pc.)

✉ [teknik@simset.com.tr](mailto:teknik@simset.com.tr)  
 🌐 [www.simset.com.tr](http://www.simset.com.tr)

# QRH Series Quick Release Hook



QRH-1

The Quick Release Hook is practical safety equipment that securely ensures the mooring line connection between the buoy and the ship. While ensuring the secure holding of ship lines, it allows the unloaded line to be released easily thanks to the movable part on the load shaft. With Turk Loydu project and test approval, these hooks meet high safety standards.

<b>Load Capacity</b>	50 ton – 200 ton
<b>Project Approval</b>	Turk Loydu
<b>Material</b>	ST52-3 Steel

### General Features

**Design and Functionality:** Securely provides the mooring connection between the buoy and the ship and allows for the practical release of lines.

**Material Quality:** The hook body is manufactured from ST52-3 material, and the mounting shaft is manufactured from C45 material.

**Project and Test Approval:** All hooks have Turk Loydu project and test approval. All stages of production are carried out under third party supervision in accordance with international standards.

**Load Capacity:** Production can be carried out in the range of SWL 50 ton – 200 ton.

**Maintenance Ease:** Requires very little maintenance; the risk of jamming and sticking is minimized thanks to bronze bearings and grease fittings.

**Assembly and Disassembly:** Horizontal pins are removable, allowing the hooks to be easily disassembled and installed.

### Product Image



Usage Areas:

### Packaging and Storage:

You can contact us for detailed information!

- Quick Release Hook (1 pc.)

✉ [teknik@simset.com.tr](mailto:teknik@simset.com.tr)  
 🌐 [www.simset.com.tr](http://www.simset.com.tr)

# CMB Series Conical Marker Buoy



CMB-1

Conical buoys are an important aid to navigation used to ensure safe navigation in maritime environments. These devices, which are used for various purposes such as marking dangerous zones, determining navigation routes, and indicating pilot boarding points, are designed and manufactured in accordance with international standards.

Conical buoys, produced according to standards set by IMO (International Maritime Organization) and IALA (International Association of Marine Aids to Navigation and Lighthouse Authorities), are long-lasting and reliable with their structures resistant to all kinds of weather and sea conditions. Production processes are carried out in compliance with quality standards under the supervision of independent inspection bodies (third party).

### General Features

**Compliance with International Standards:** Full compliance with all technical requirements determined by IMO and IALA.

**High Visibility:** Bright colors for daytime visibility; reflectors or optional LED lighting for night visibility.

**Conical Geometry:** Aerodynamic design providing minimum resistance against wind and current.

**Top Mark and Light Equipment:** Superstructures and light systems determined according to international codes.

**Third Party Inspection:** All production processes are monitored and certified by independent inspection bodies.

**Long-Life Performance:** High resistance against wear, corrosion, and UV effects.

### Product Image



Usage Areas:

### Packaging and Storage:

You can contact us for detailed information!

- Conical Marker Buoy (1 pc.)

✉ [teknik@simset.com.tr](mailto:teknik@simset.com.tr)  
 🌐 [www.simset.com.tr](http://www.simset.com.tr)

# Company and

# Personnel Certificates

"As Sim Set Endüstri Taah. Tic. ve Mak. San. Ltd. Şti., we prioritize quality, trust, and sustainability with our certificates that certify our production approach in accordance with national and international standards."



The data contained in this technical document is based on our scientific and practical knowledge. **SİMSET ENDÜSTRİYEL TAAH. TİC. & MAK. SAN. LTD. ŞTİ.** is responsible solely for the quality of the product. **SİMSET ENDÜSTRİYEL TAAH. TİC. & MAK. SAN. LTD. ŞTİ.** cannot be held liable for consequences arising from misuse and/or usage outside of the written recommendations regarding where and how the product is to be used. This technical document is valid until a new edition is published and supersedes all previous editions.





REPUBLIC OF TÜRKİYE  
MINISTRY OF TRANSPORT AND INFRASTRUCTURE  
DIRECTORATE GENERAL FOR REGULATION OF TRANSPORT SERVICES



## INSPECTION CENTER OPERATION AUTHORIZATION CERTIFICATE

YETKİ BELGESİNİN		
DATE OF ISSUE	VALIDITY DATE	CERTIFICATE NUMBER
10/10/2022	22/11/2027	BKN.U-NET.MM.41.15
AUTHORIZATION CERTIFICATE HOLDER (U-NET NO = 358603 )		
COMMERCIAL TITLE	SİM SET ENDÜSTRİYEL TAAH.TİC.VE MAK.SAN.LTD.ŞTİ.	
SHORT TITLE	SİMSET	
ADDRESS	BARBAROS MAH. FUNDA SOK. NO:2 KÖRFEZ/KOCAELİ	
TRADE REGISTRY NO	1629	
TAX OFFICE / NO	KÖRFEZ / 7700120602	
SCOPE	Tehlikeli Madde Taşıyan Araç ve Üst Yapıların Muayeneleri 2a ***1 **2b **3a **3b **	



THIS AUTHORIZATION CERTIFICATE HAS BEEN GRANTED FOR THE OPERATION OF THE INSPECTION CENTER AT THE ADDRESS SPECIFIED ABOVE.



LIST OF THE QUALIFIED WELDERS													Dök.No:	SİM-LS.006
													Rev.Tarih-No:	08.11.2023/03
Project Name :													Date :	18.Kas.21
Welder No.	Qualification Standard	Certificate No.	Name, Surname	Welding Method	Joint Type	Product Type (Pipe / Plate)	Parent Material	Filler Material	Position	Thickness Range	Weld Details	Validity until	Remarks	
W01	TSEN 9606-2	WC/22/117	BÜLENT İŞERİ	141	BW	P	TS EN ISO15608:22.4	TS EN ISO14175:1-1	H-L045	2,5mm ≤ t ≤ 10mm	ss nb	1.09.2028		
W01	TSEN 9606-2	WC/22/120	BÜLENT İŞERİ	141	FW	P,T	TS EN ISO15608:22.4	TS EN ISO14175:1-1	PB	≥3mm	sl	1.09.2028		
W01	TSEN 9606-2	WC/22/118	BÜLENT İŞERİ	141	BW	P	TS EN ISO15608:22.3	TS EN ISO14175:1-1	PC	≥3mm	bs	1.09.2028		
W01	TSEN 9606-2	WC/22/121	BÜLENT İŞERİ	141	FW	P	TS EN ISO15608	TS EN ISO14175:1-1	PD	≥3mm	sl	1.09.2028		
W01	TSEN 9606-2	WC/22/119	BÜLENT İŞERİ	141	BW	P	TS EN ISO15608:22.3	TS EN ISO14175:1-1	PF	N/A	bs	1.09.2028		
W02	TSEN ISO 9606-2:2004	TR-MU-22-51-1542	ERKAN GÖREN	131	FW	p	TS EN ISO15608:22.3	EN ISO 2560	PB	≥3mm	sl	1.09.2028		
W03	TSEN 9606-1	WC/22/112	ERKAN GÖREN	111	BW	T	TS EN ISO15608:1.2	A:E424B42HS EN ISO 2560.	H-L045	3mm ≤ t ≤ 10mm	ss nb	1.09.2028		
W03	TSEN 9606-1	WC/22/116	ERKAN GÖREN	141	BW	T	TS EN ISO15608:1.2	A:E424B42HS EN ISO 2560.	H-L045	2,5mm ≤ t ≤ 10mm	ss nb	1.09.2028		
W03	TSEN 9606-1	WC/22/113	ERKAN GÖREN	111	BW	T	TS EN ISO15608:1.2	A:E424B42HS EN ISO 2560.	PC	≥3mm	bs	1.09.2028		
W03	TSEN 9606-1	WC/22/114	ERKAN GÖREN	111	BW	T	TS EN ISO15608:1.2	A:E424B42HS EN ISO 2560.	PF	≥3mm	bs	1.09.2028		
W03	TSEN 9606-1	WC/22/115	ERKAN GÖREN	111	FW	T	TS EN ISO15608:1.2	A:E424B42HS	PD	≥3mm	-	1.09.2028		

The data contained in this technical document is based on our scientific and practical knowledge. SİMSET ENDÜSTRİ TAAH. TİC. & MAK. SAN. LTD. ŞTİ. is responsible solely for the quality of the product. SİMSET ENDÜSTRİ TAAH. TİC. & MAK. SAN. LTD. ŞTİ. cannot be held liable for consequences arising from misuse and/or usage outside of the written recommendations regarding where and how the product is to be used. This technical document is valid until a new edition is published and supersedes all previous editions.





SİMSET ENDÜSTRİ TAAH. TİC. & MAK. SAN. LTD. ŞTİ.

☎ 0262 527 22 51

✉ teknik@simset.com.tr

🌐 www.simset.com

Barbaros Mah.

Funda Sok. No:2

Körfez / KOCAELİ

